



**Installation Guide**

# One Device Diagnoses All Five Vehicle/Vessel Types!



**PWC**



**MARINE**



**ATV**



**BIKES**



**SNOW-MOBILE**

**Our Software Never Expires!**



## Installation Guide

**Congratulation to  
your new  
iDS diagnostic tool.**

*Before you start the software installation please check that your "WINDOWS" system is installed on your computer/laptop/netbook on "local drive C:"*

Please follow the steps in this manual to install your Scan World System software application.

You can use the original software CD for your installation.

*The installation will start automatically within a few seconds after you insert the CD into your CD-drive.*

**Go to page 4**



*If you're going to install the software on a device that does not have a cd-drive, you can copy the software from the original CD to a memory stick.*

*In this case the installation has be started manually.*





## Installation Guide

### Manual installation from memory stick

Go to **“My Computer”**  
(Windows XP)

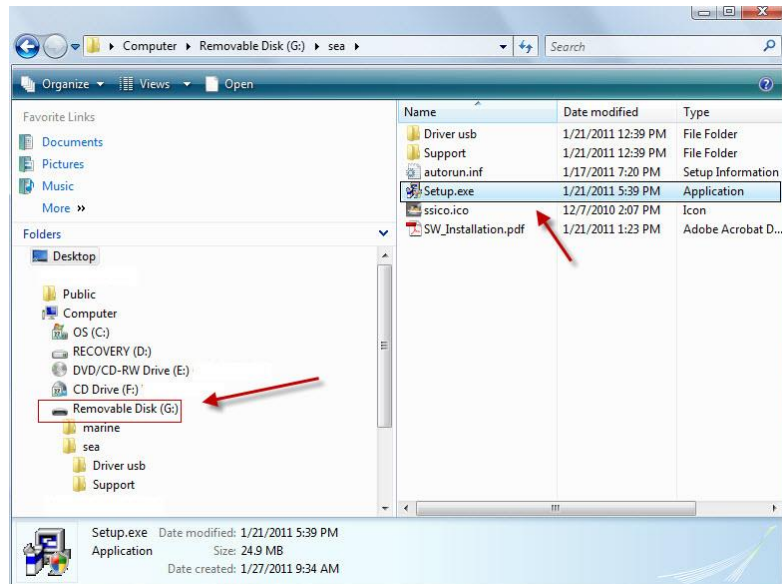
Or

**“Computer”**  
(Windows Vista/7/8).



### Choose either the Memory stick or the CD-drive

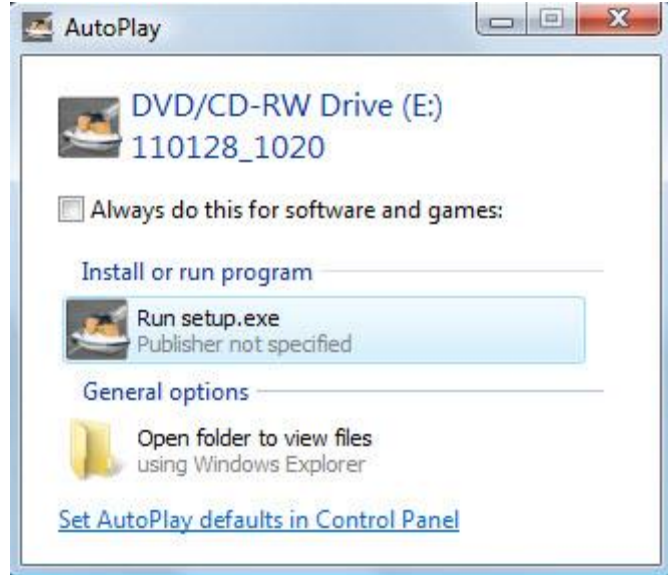
Double click setup to start installation





## Installation Guide

### Automatic installation



Click **“Run Setup”**

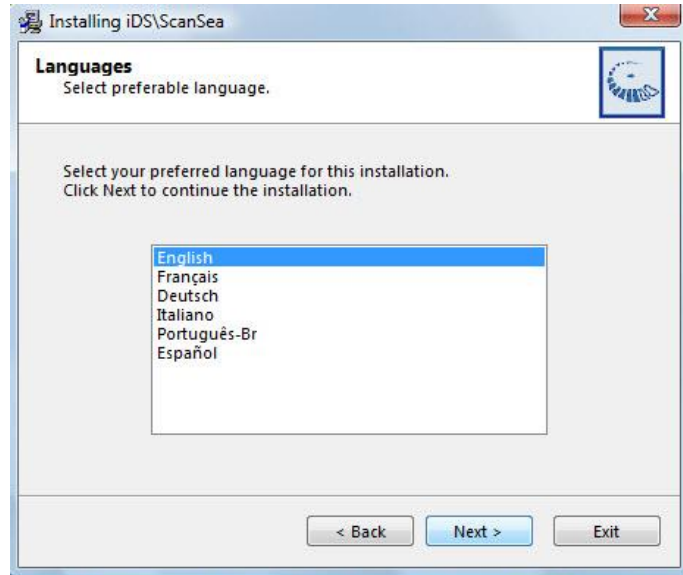


Click **“Next”**



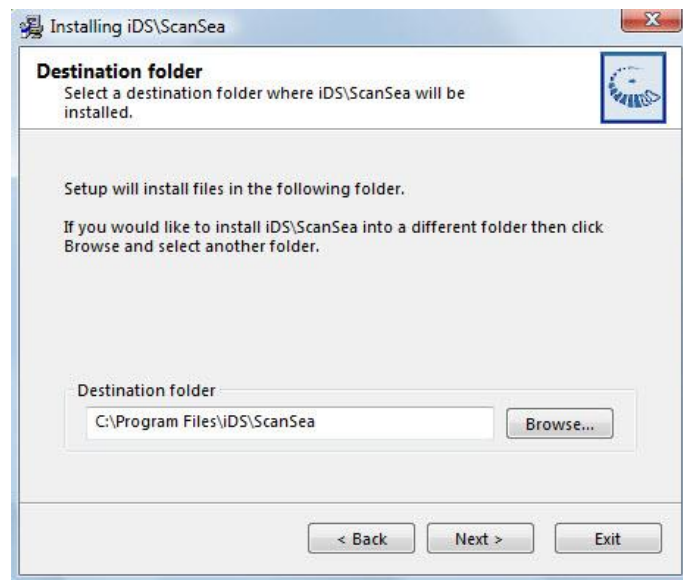
## Installation Guide

**Choose preferred Language**



**Click "Next"**

**Use default destination folder (recommended) or choose your own**



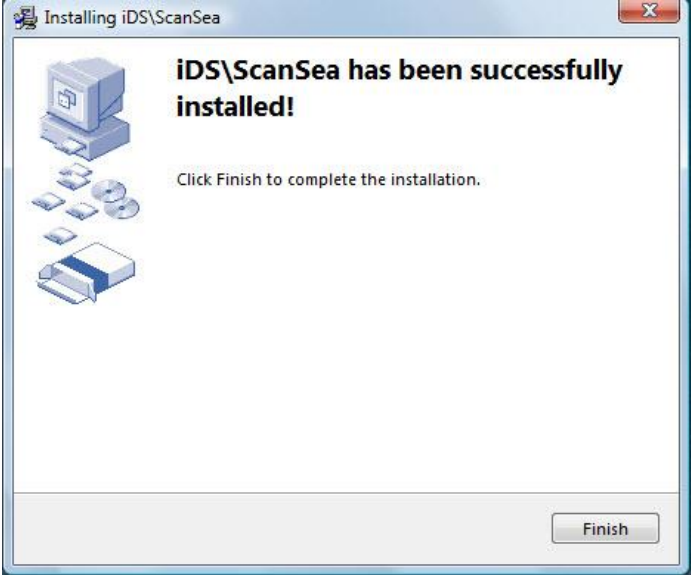
**Click "Next"**



## Installation Guide

**Setup will install the program and necessary driver automatically**

**Click "Finish"**



**One (or more) of these Icons will be placed on your desktop.**





## Installation Guide

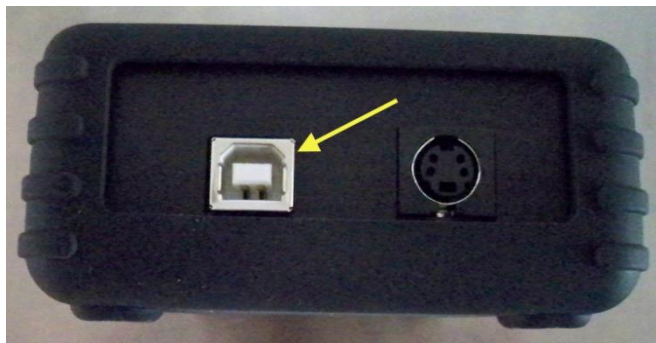
***Please connect your hardware as shown:***

***Before starting your new software, you need to connect the iDS to your computer***

***Plug the USB cable into your computer***



***Plug in the other end of the USB cable into the iDS USB jack***





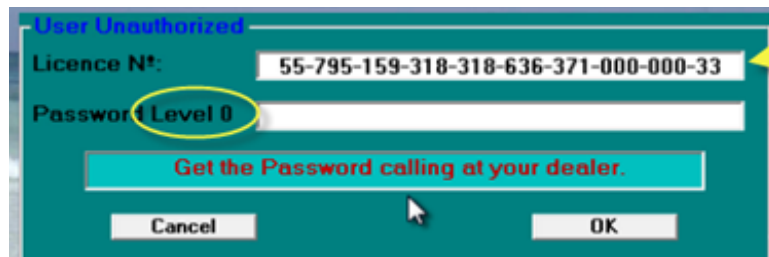
## Installation Guide

### **AUTOMATIC** **REGISTRATION WITH** **INTERNET CONNECTION**

By starting the software for the first time (make sure the iDS is connect to your computer), the registration process will start automatically. You'll see every step of the registration on your screen. Please do NOT interrupt this process! When the registration is finished, you need to exit the software. When you re-start the software, the application is ready to use.

### **MANUAL** REGISTRATION **WITHOUT INTERNET** **CONNECTION**

When you start the program after the installation, the program will show you a license number and a password level on the first screen.



We need this **license** and **password level number** to create your password.

**NOTE!** *The passwords for each software application need to be requested separately!*

If you purchased more than one software application, you need to request and type in the password for each application separately.

**After the first password is typed in the next software can be started to generate the License No.**

***please do NOT shut down your computer or close the software*** before you received and keyed in your password. Otherwise the computer will create a new, different license number and the password would not work!

Please contact the manufacturer with your password request. Please be advised that the factory is located in Europe, therefore they're in a different time zone (**Eastern Time + 6 hours!**)

Manufacturer  
e-mail address: [info@scanworldsystem.com](mailto:info@scanworldsystem.com)





## Installation Guide

### **Software update download**

*Our engineers working very hard to constantly improve our software applications. After you installed the master software from the CD and the password was accepted, we like to ask you to check for possible new updates on our web-server.*

***Before start using the software you must download and install the latest update for your application!***

***Please also check frequently back for new updates.***

**<http://sws1.com/updates.shtml>**

***User name & Password for Software update download***

*You find your personal user name and password for the software update downloads in the e-mail send to you together with the tracking number when your system was shipped.*

***Frequently ask questions Support***

**<http://sws1.com/support.shtml>**

***Watch can also watch our video about Software installation***

**<http://sws1.com/support.shtml#installationvideo>**

Having trouble viewing this video? [Click here to see it on YouTube.](#)